

Bank Failures Since 2007 by Asset Size

Prepared for:



MID-SIZE BANK COALITION OF AMERICA

November 19, 2012

Jeffrey A. Brand

Managing Director



KEEFE, BRUYETTE & WOODS

General Information and Limitations

This presentation has been developed by and is proprietary to Keefe, Bruyette & Woods, Inc. ("KBW") and was prepared exclusively for the benefit and internal use of the recipient. Neither this printed presentation nor any of its contents may be used, reproduced, disseminated, quoted or referred to for any other purpose without the prior written consent of KBW.

The analyses contained herein rely upon information obtained from the recipient or from public sources, the accuracy of which has not been independently verified, and cannot be assured by, KBW. In addition, many of the projections and financial analyses herein are based on estimated financial performance prepared by or in consultation with the recipient and are intended only to suggest a reasonable range of results for discussion purposes.

Neither KBW nor any other party makes any representation or warranty regarding the information contained herein and no party may rely on such information. The information contained herein will not be updated or corrected based on any additional information. This information should not be construed as, and KBW is not undertaking to provide, any advice relating to legal, regulatory, accounting or tax matters.

KBW prohibits employees from offering, directly or indirectly, favorable research, a specific rating or a specific price target, or offering or threatening to change research, a rating or a price target to a company as consideration or inducement for the receipt of business or compensation.

This presentation is protected under applicable copyright laws and does not carry any rights of publication or disclosure.

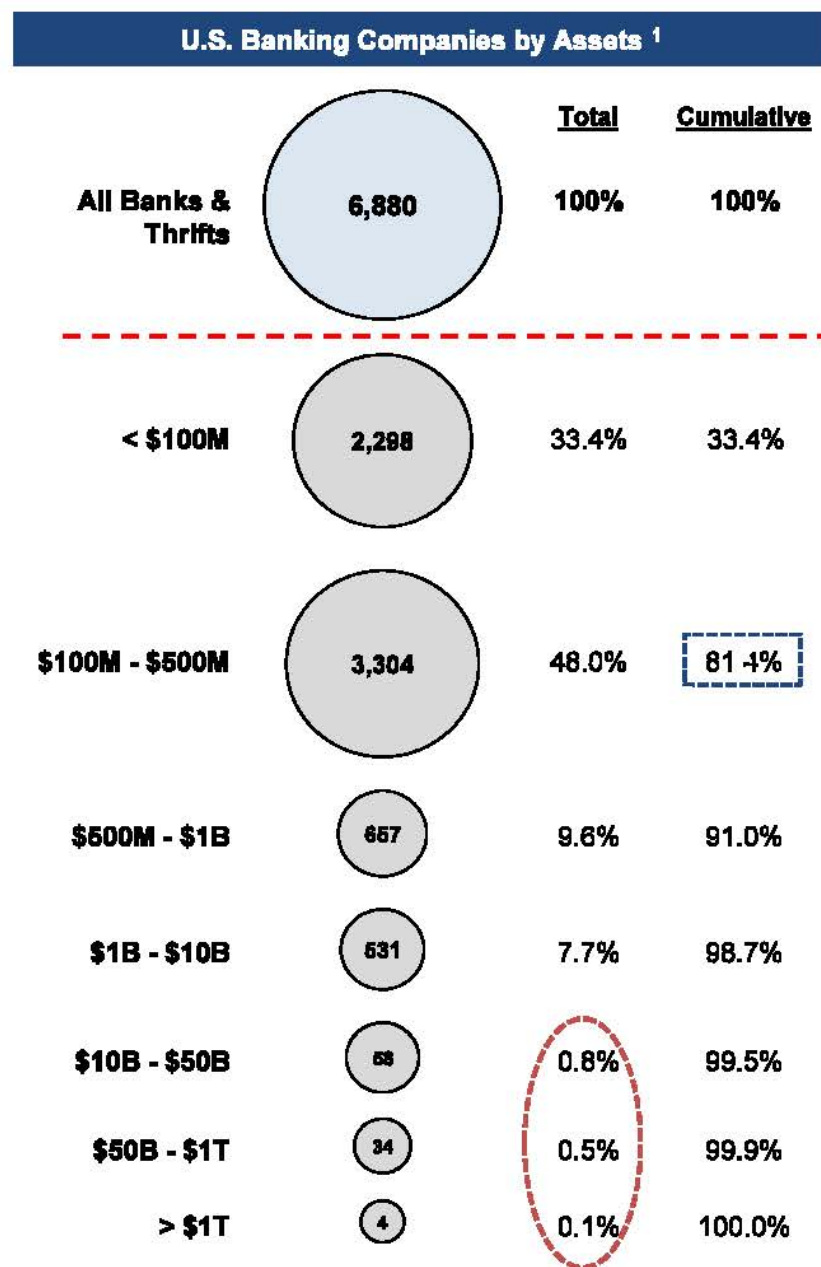
KBW is a U.S. registered broker-dealer and a member of the Financial Industry Regulatory Authority. KBW is a wholly-owned subsidiary of KBW, Inc. KBW, Inc. through its subsidiaries KBW, Keefe, Bruyette & Woods Limited and Keefe, Bruyette & Woods Asia Limited, is a full service investment bank specializing in the financial services industry.

Banking Industry Analysis by Asset Size

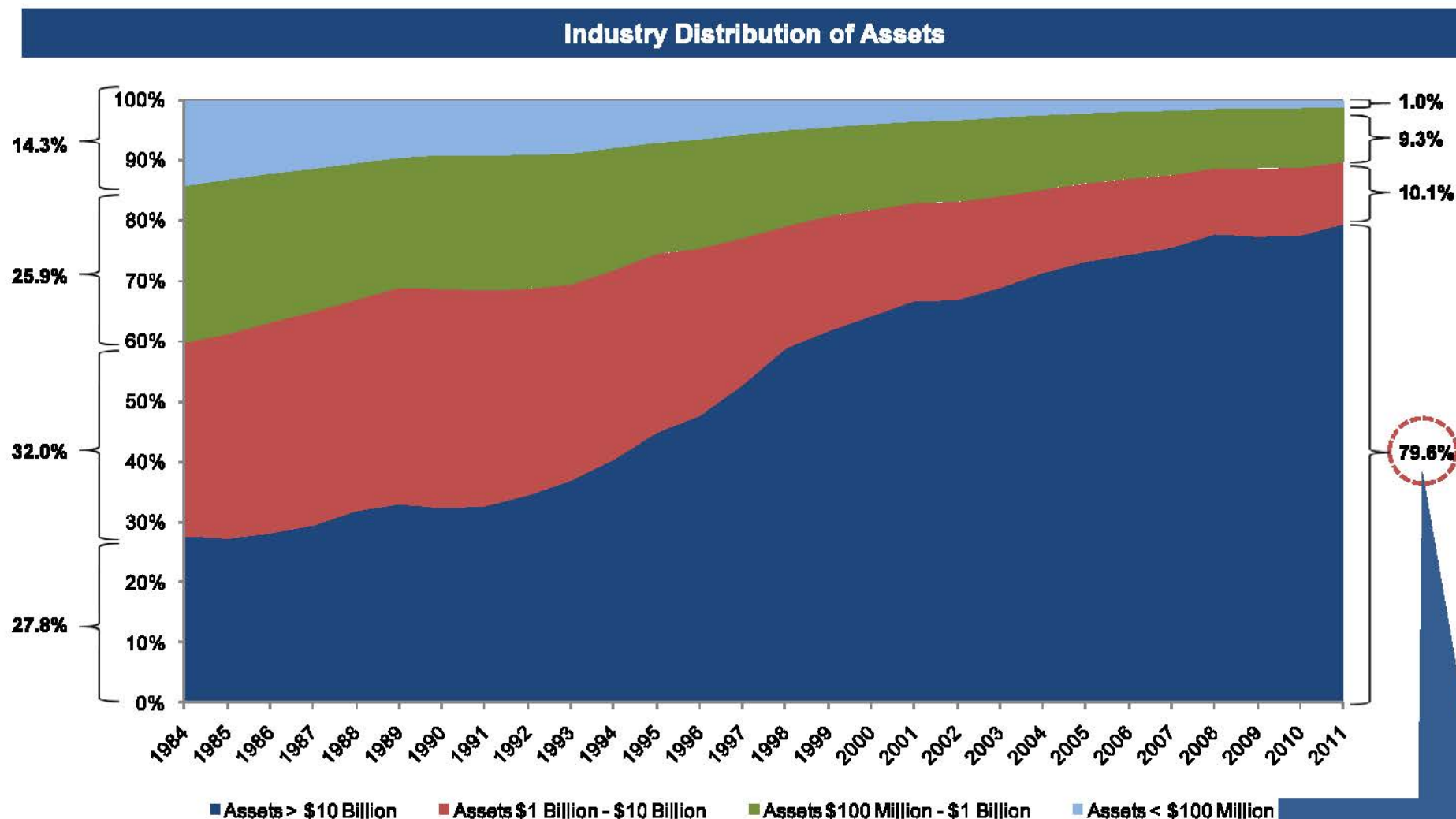


KEEFE, BRUYETTE & WOODS

Number of Banks by Asset Size Bucket



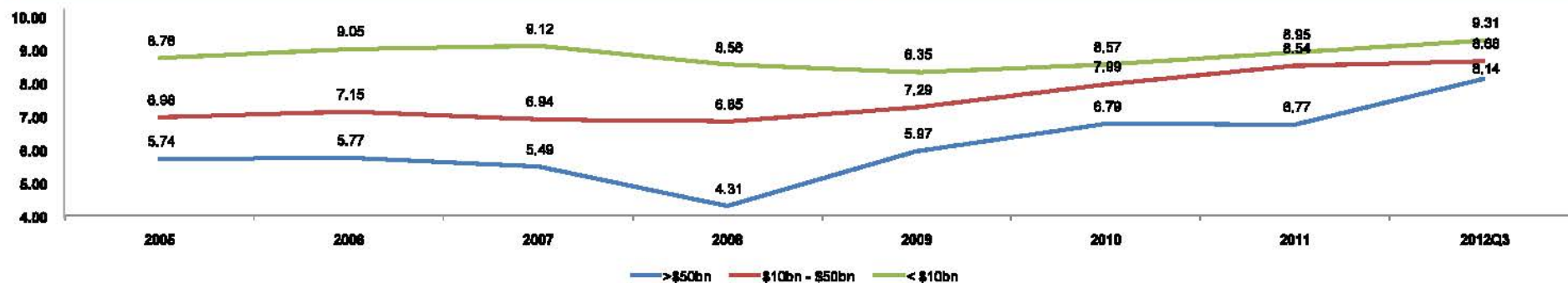
Industry Distribution by Asset Size Bucket



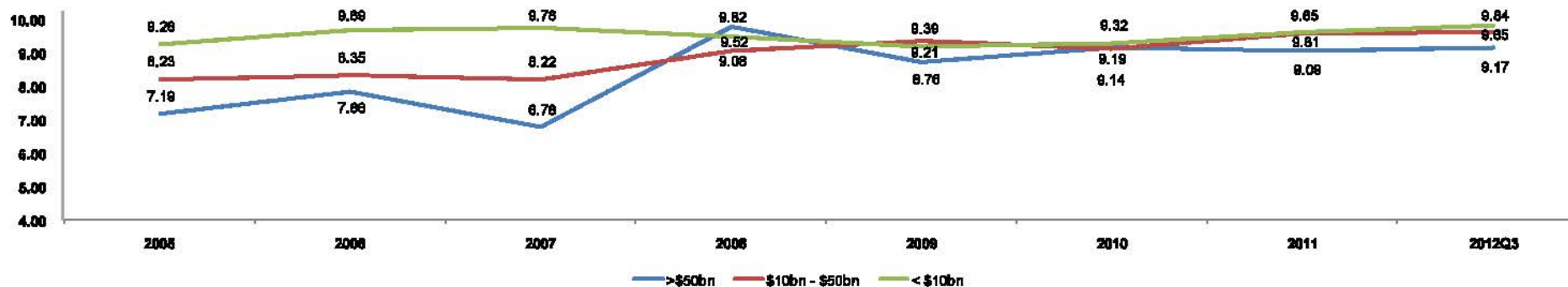
Of the 79.6% of total assets, 69.9% of total assets are held by banks >\$50bn (i.e. banks \$10 - \$50bn hold 9.7% of total assets)

Capital Ratios by Asset Size Bucket

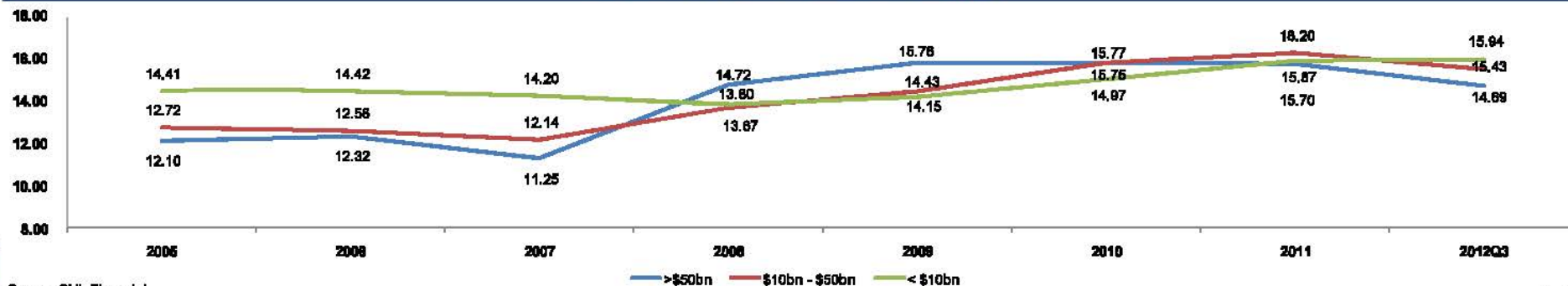
TCE / TA (%)



Leverage Ratio (%)

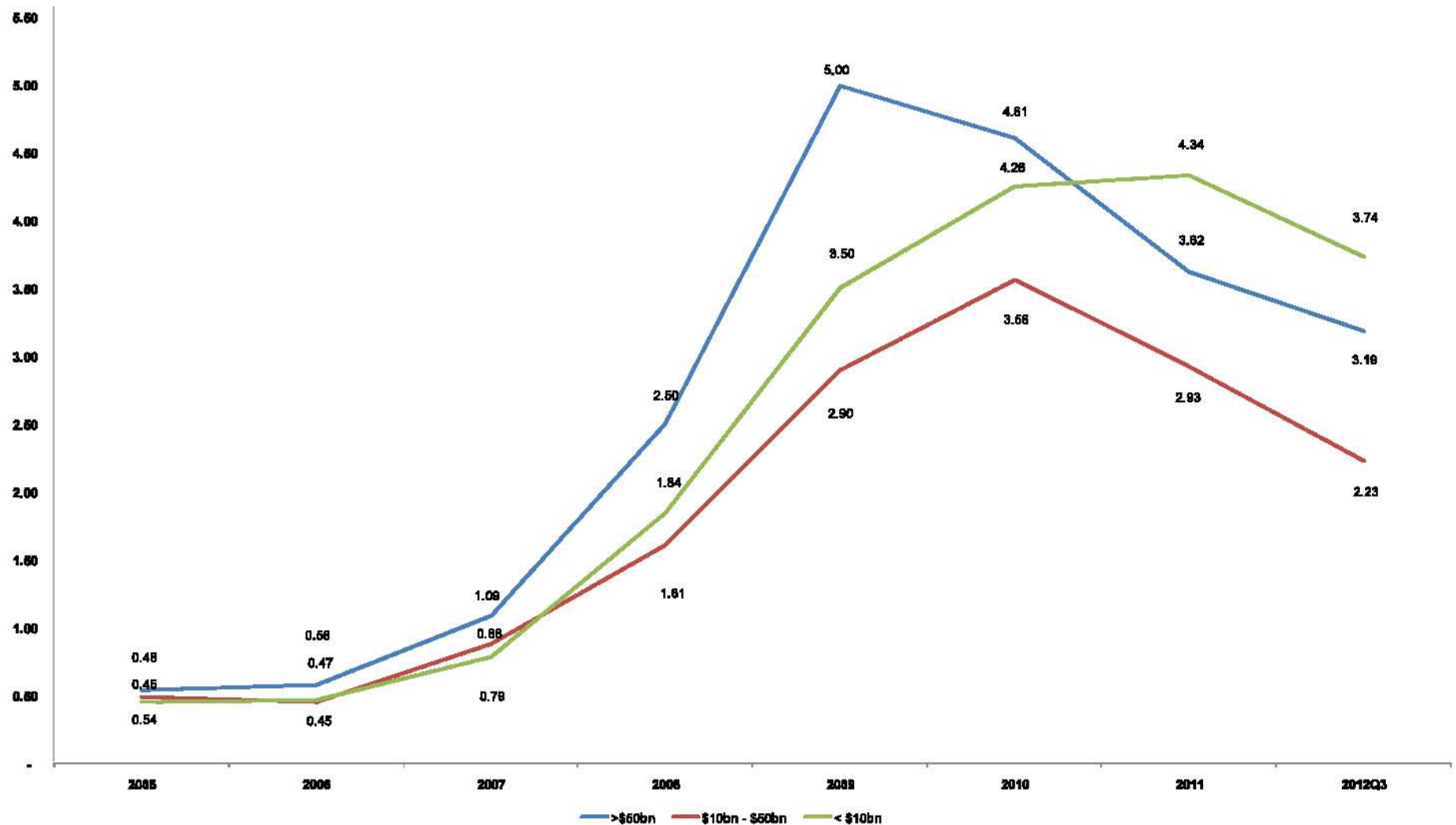


Risk-Based Capital Ratio (%)



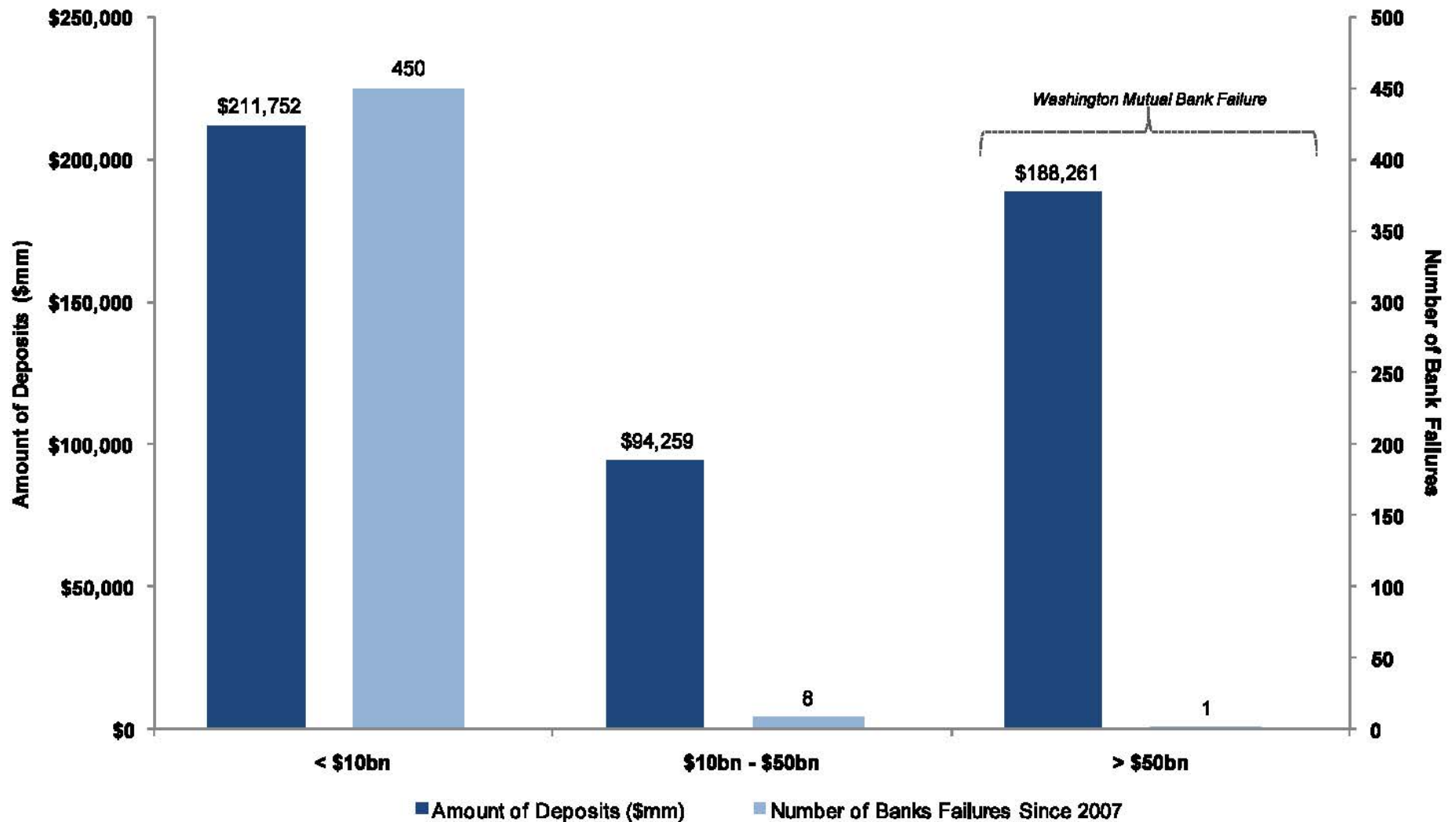
Asset Quality by Asset Size Bucket

NPAs + Loans 90PD / Loans + OREO (%)



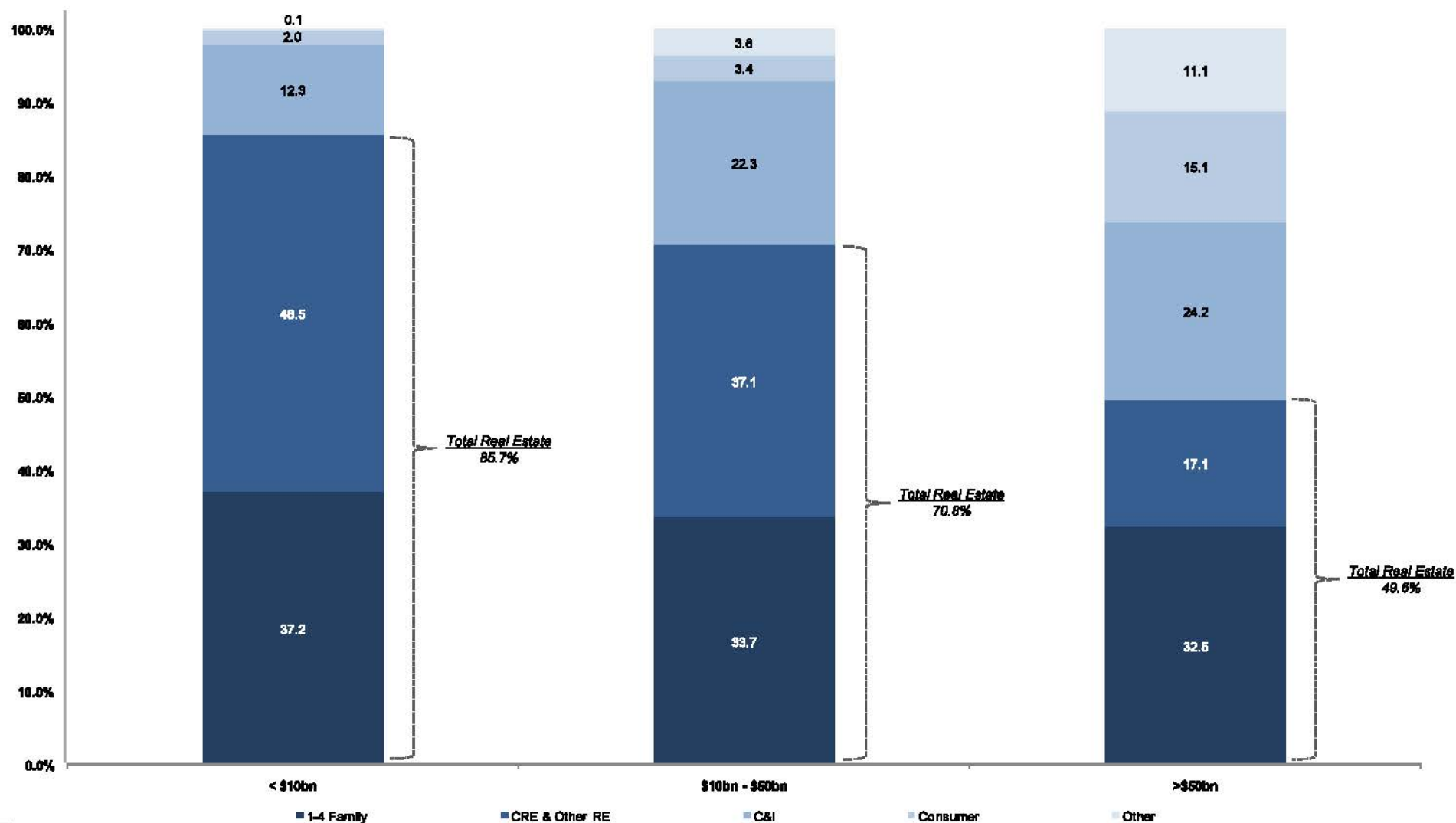
Bank Failures Since 2007 by Asset Size Bucket

Number of Bank Failures & Total Deposits Associated with the Failed Banks



Loan Mix by Asset Size Bucket

Loan Composition



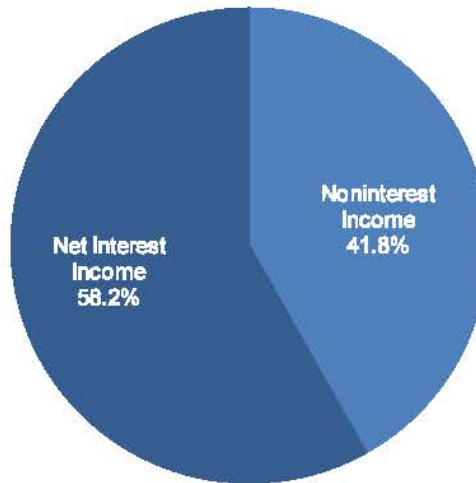
Source: SNL Financial

Note: Data represents all 1,144 public banks (19 banks >\$50bn assets, 45 banks \$10bn - \$50bn assets, 1,080 banks <\$10bn assets)

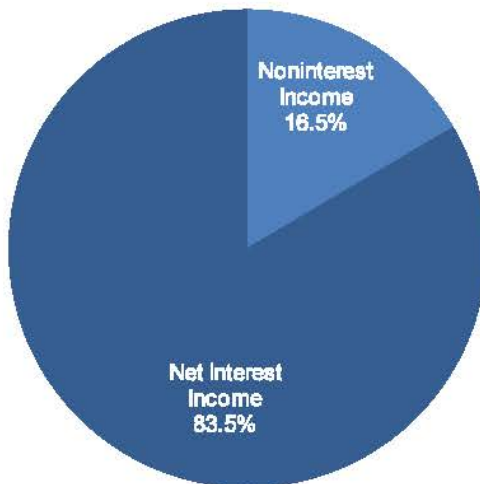
Note: "CRE & Other RE" includes CRE, multifamily, and construction / land development loans. "Other" includes all other loans & leases

Revenue Distribution by Asset Size Bucket

Assets: > \$50bn



Assets: < \$10bn



Assets: \$10bn - \$50bn

