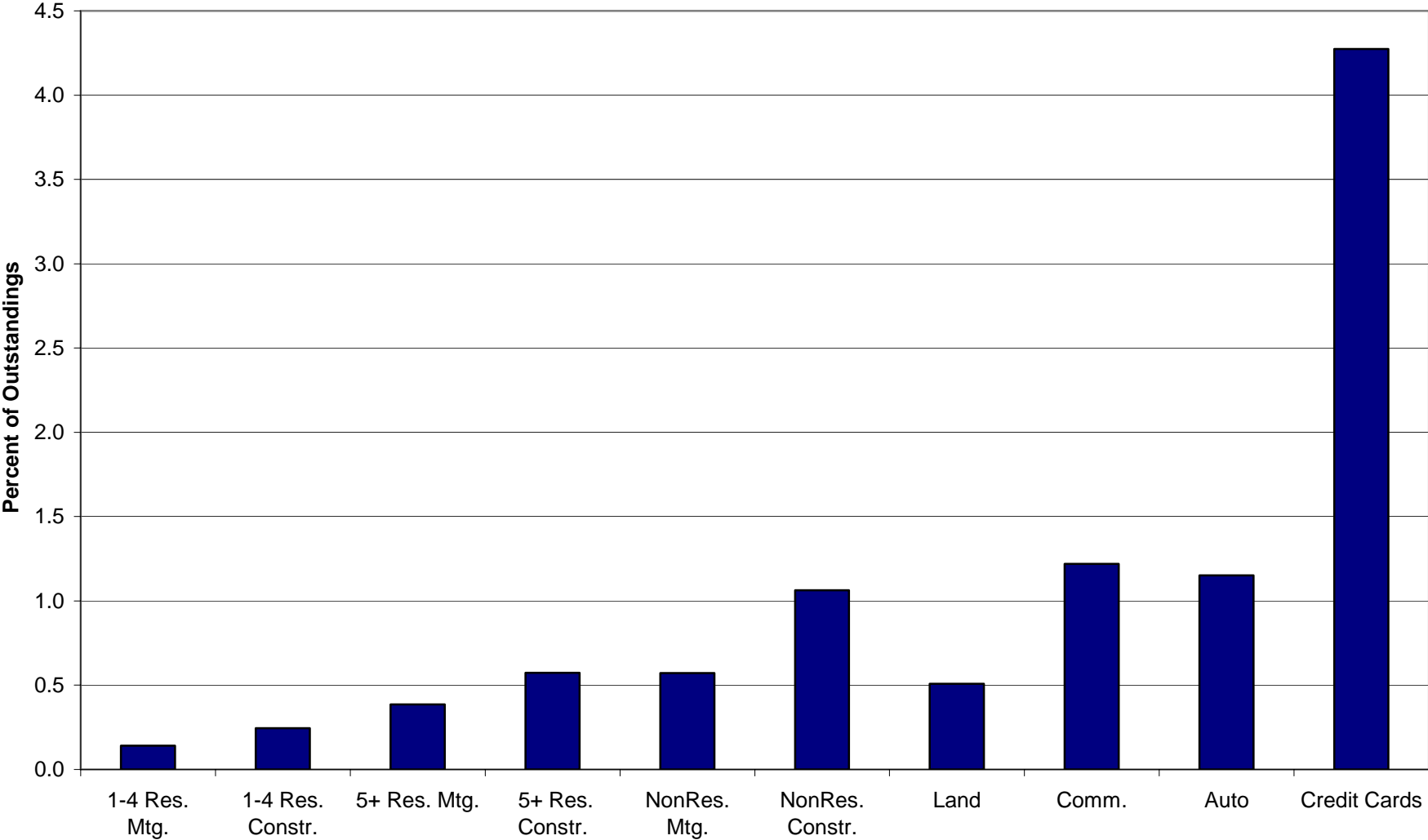


Acquisition, Development and Construction (AD&C) Loan
Performance Data
1990 through 2004

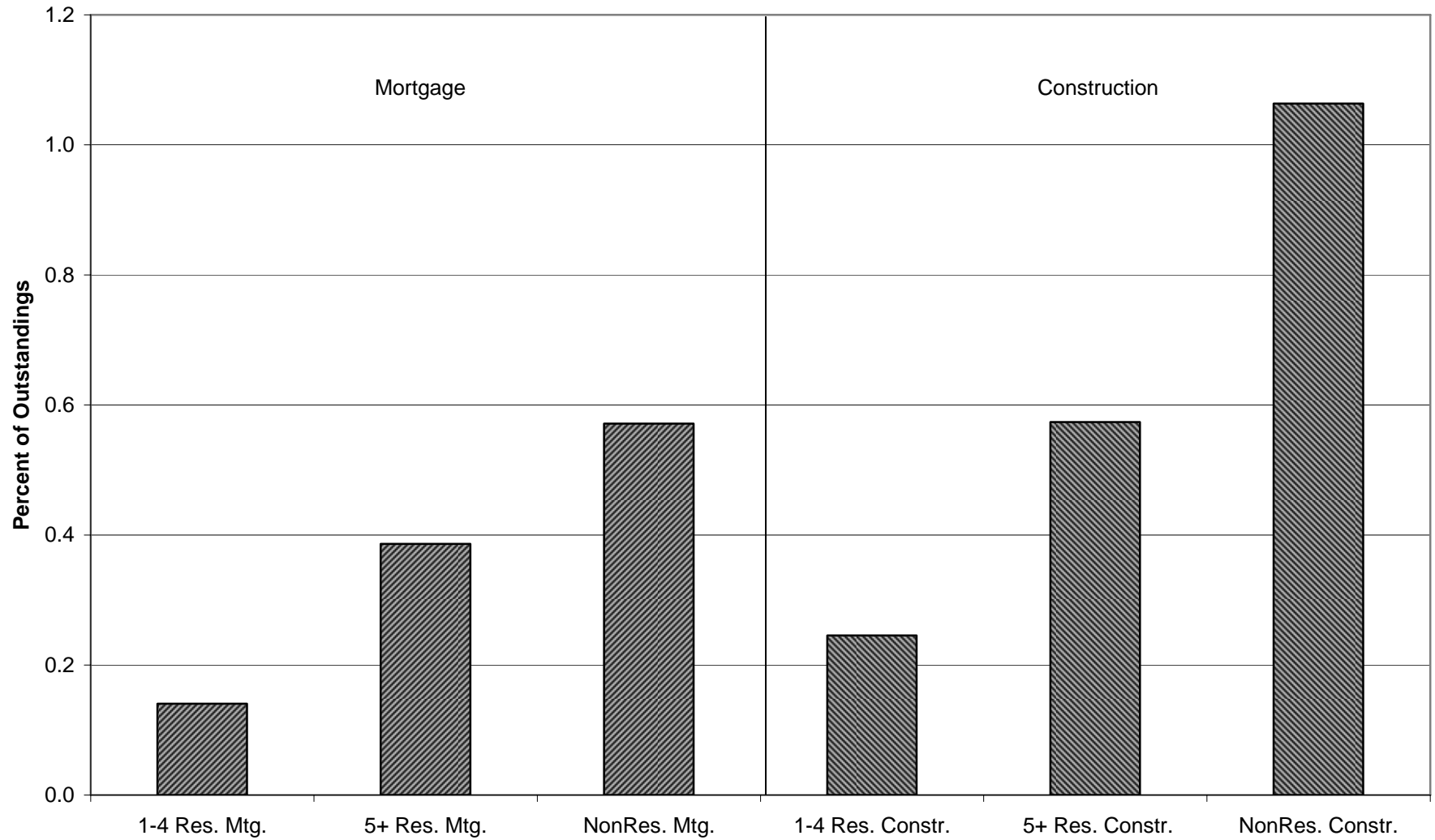
Compiled by:
Housing Finance Department
National Association of Home Builders



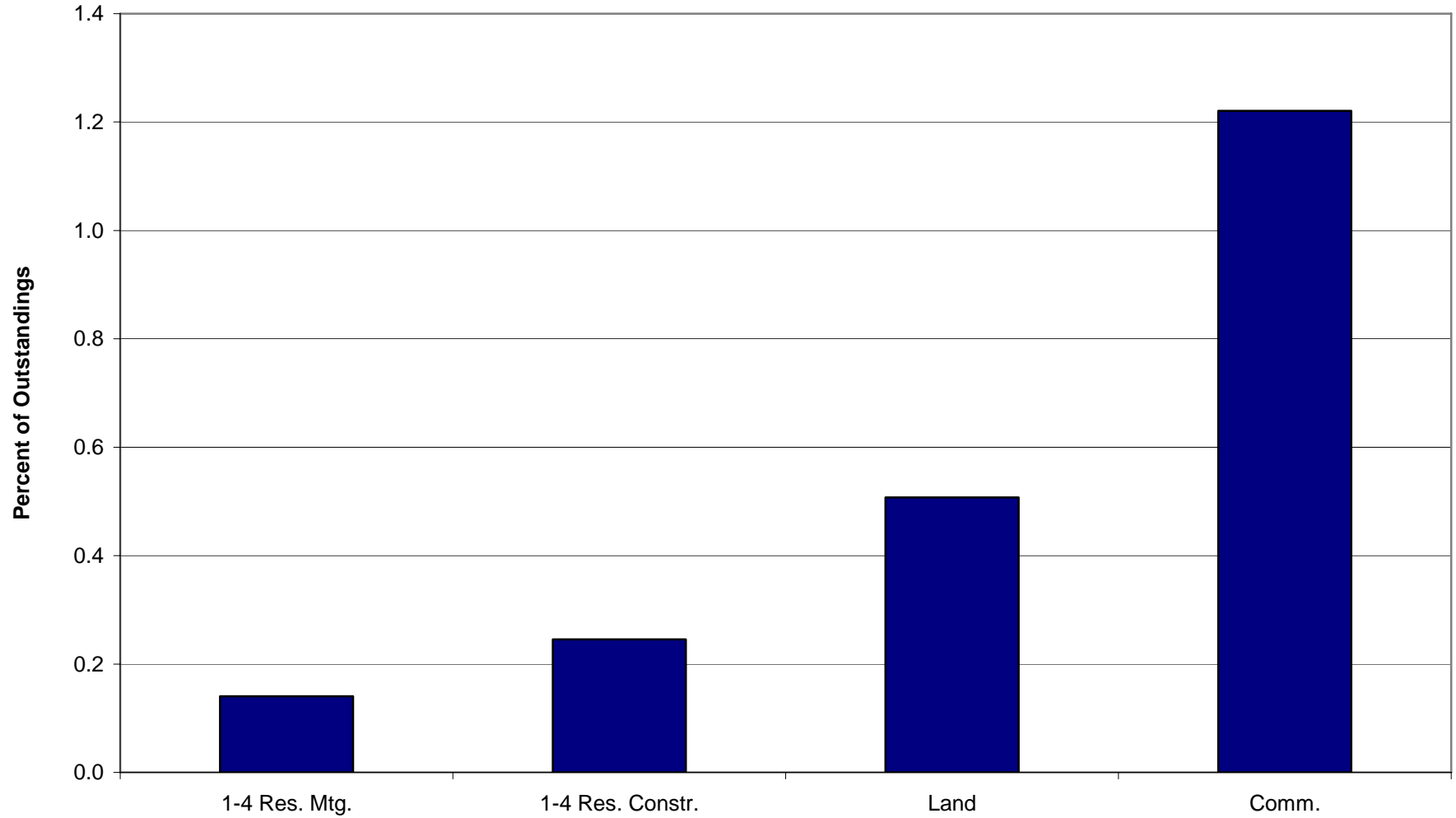
Comparison of Net Chargeoff Rates by Loan Type for All OTS Thrifts
Annual Averages, 1990-2004



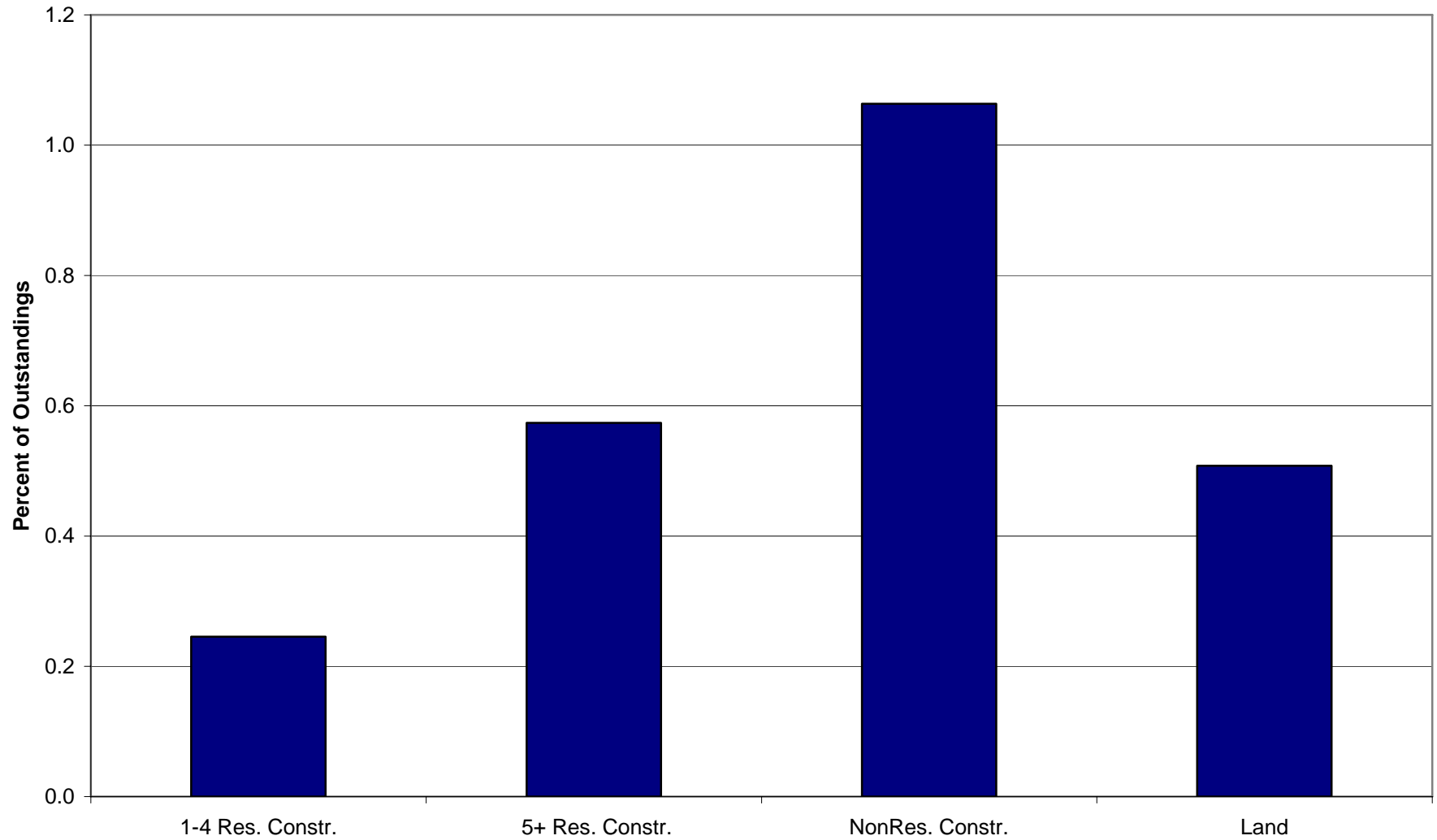
Comparison of Mortgage and Construction Loan Net Chargeoff Rates
Annual Averages, 1990-2004



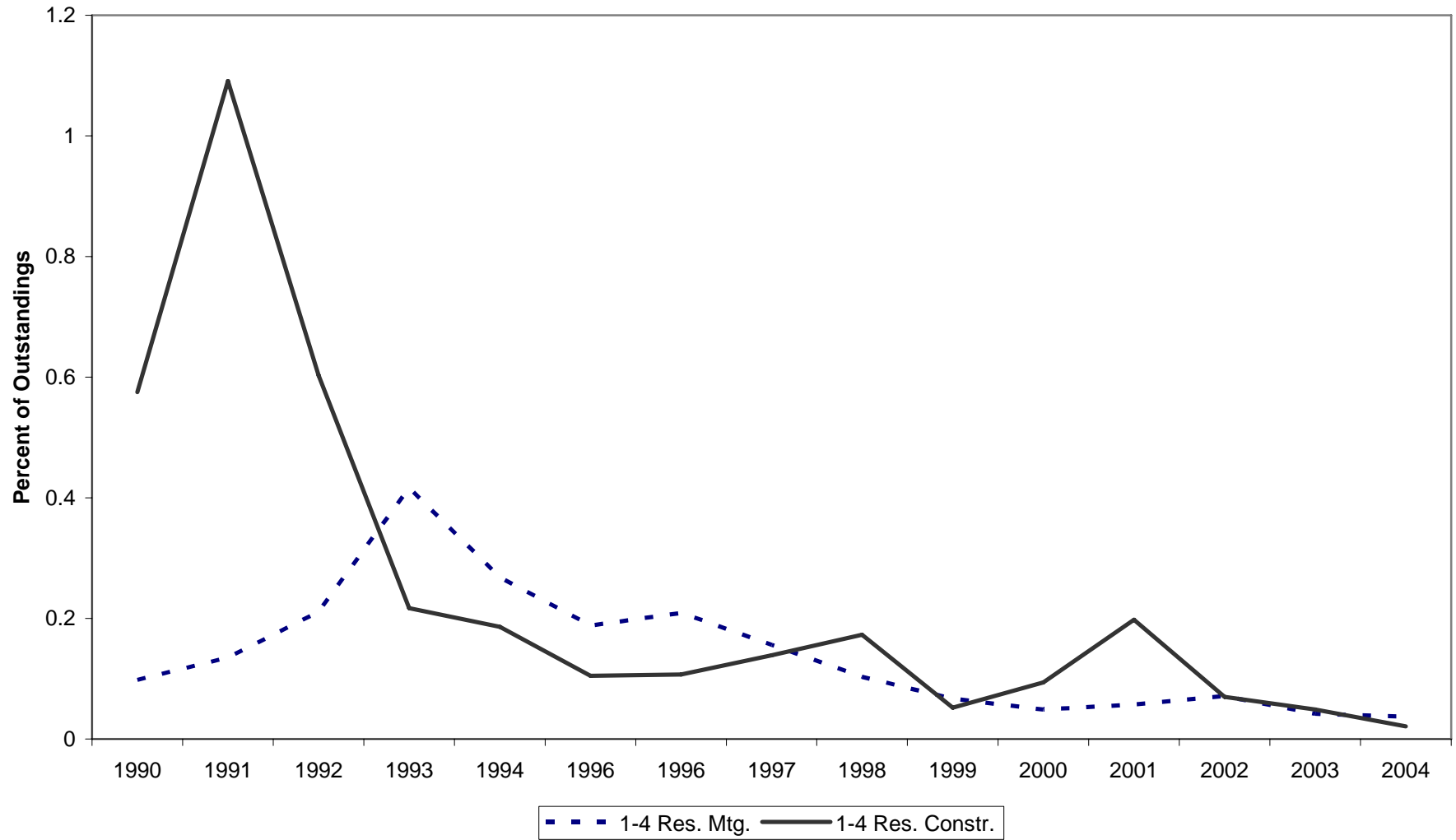
**Home Mortgage and Construction Loan Performance
Compared to Land and Commercial Loans**
Annual Averages, 1990-2004



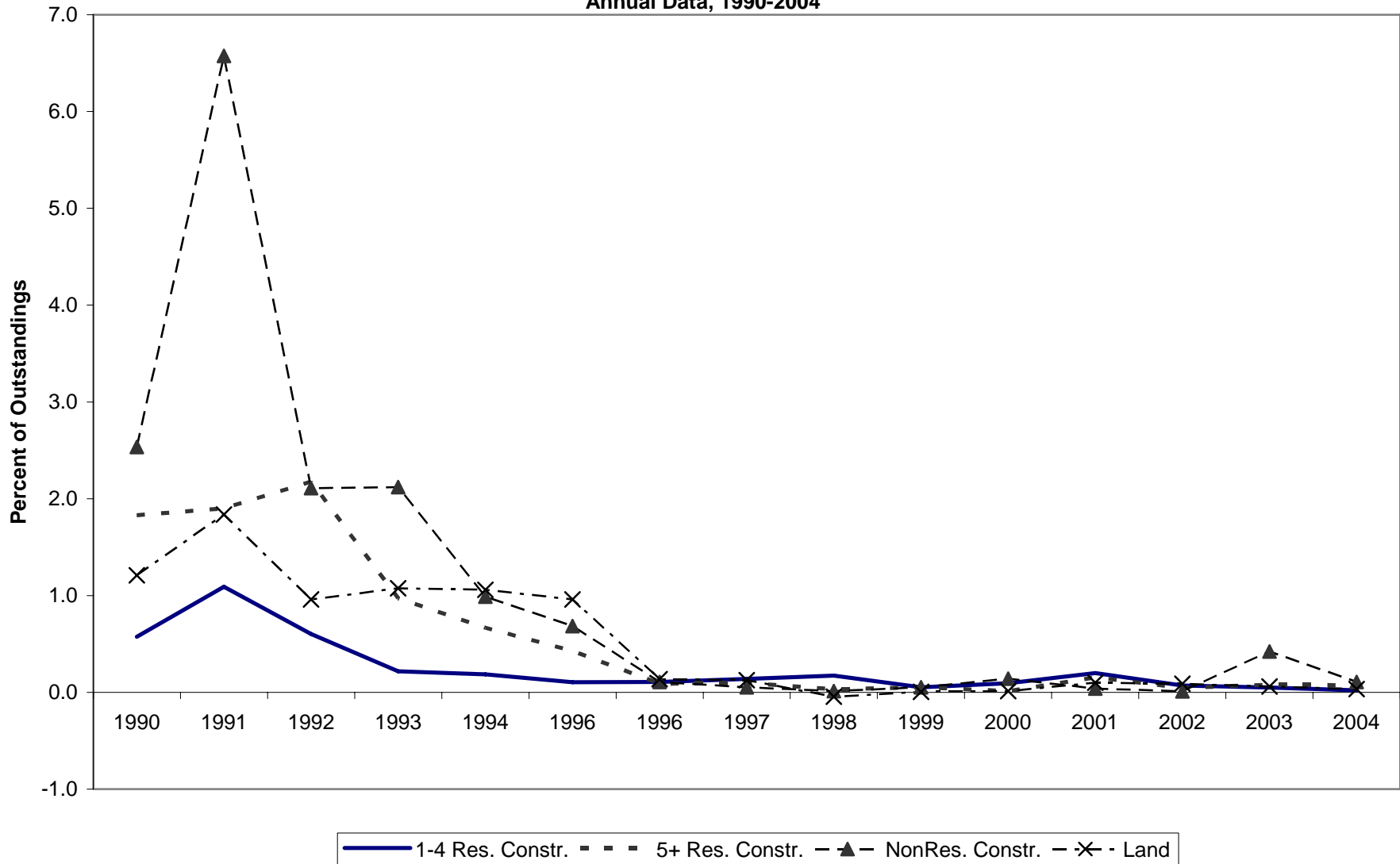
Comparison of Construction and Land Loan Net Chargeoff Rates
Annual Averages, 1990-2004



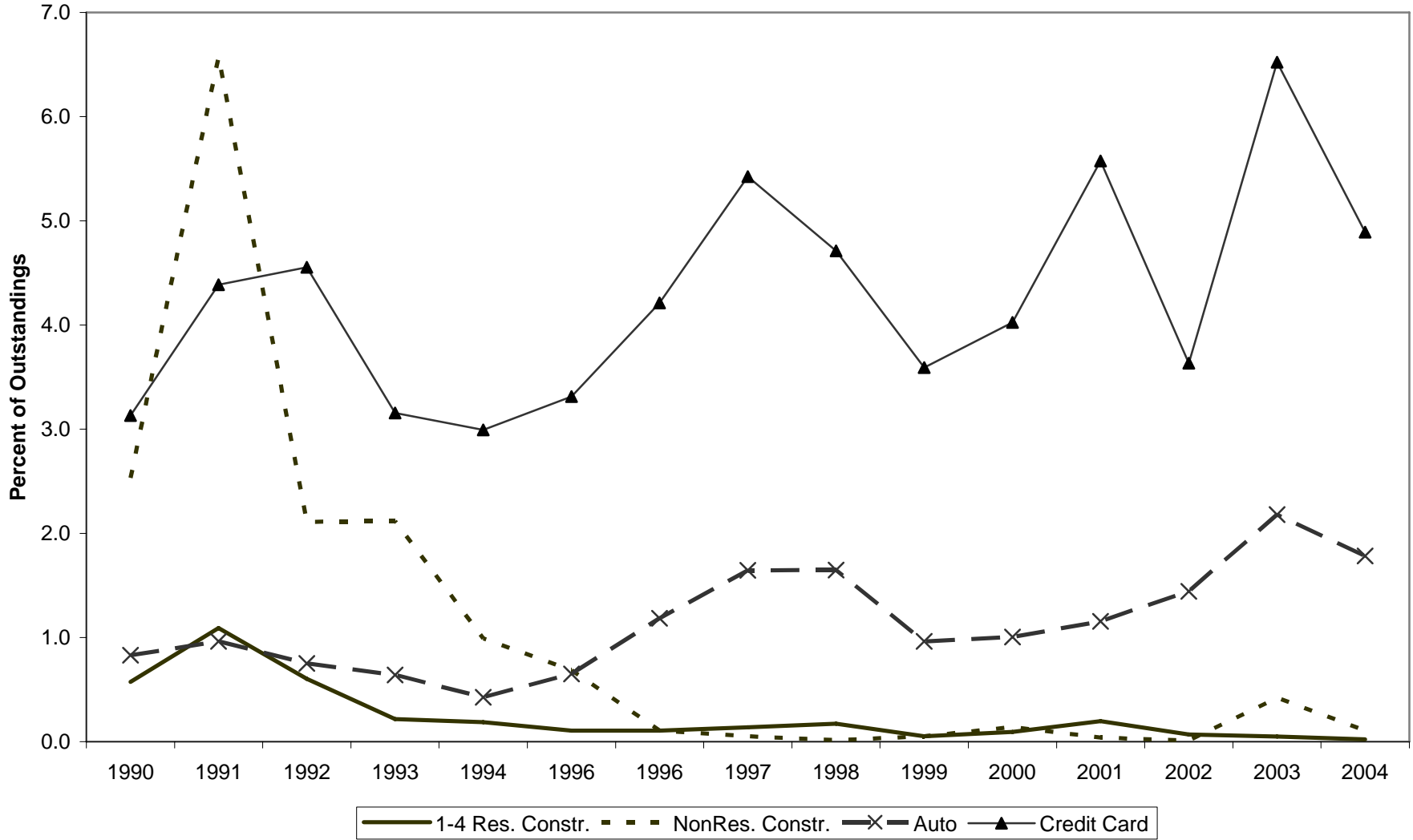
Home Mortgage and Construction Loan Performance
Savings and Loan Net Chargeoffs as Percent of Average Outstanding Loans
Annual Data, 1990-2004



Comparison of Construction and Land Loan Net Chargeoff Rates
Savings and Loan Net Chargeoffs as Percent of Average Outstanding Loans
Annual Data, 1990-2004



Performance of Home Construction Loans Relative to Other Loan Types
Savings and Loan Net Chargeoffs as Percent of Average Outstanding Loans
Annual Data, 1990-2004



Net Charge-offs as Percent of Average Loan Amount - By Loan Type for all OTS Thrifts

Annualized from Quarterly Data

Year	Percent of 1-4 Res. Mtg. Loans	Percent of 1-4 Res. Constr. Loans	Percent of 5+ Res. Mtg. Loans	Percent of 5+ Res. Constr. Loans	Percent of Non-Res. Mtg. Loans	Percent of Non-Res. Constr. Loans	Percent of Land Loans	Percent of Comm. Loans	Percent of Auto Loans	Percent of Credit Card Loans
1990	0.098	0.575	0.835	1.829	1.389	2.533	1.208	1.310	0.829	3.131
1991	0.135	1.091	0.610	1.898	1.166	6.574	1.836	2.190	0.963	4.386
1992	0.211	0.603	0.724	2.176	1.321	2.110	0.960	1.455	0.751	4.554
1993	0.416	0.217	0.844	0.971	1.629	2.119	1.076	3.067	0.641	3.154
1994	0.268	0.186	1.446	0.667	1.168	0.989	1.059	0.902	0.426	2.993
1996	0.188	0.105	0.644	0.427	0.781	0.684	0.959	0.674	0.651	3.312
1996	0.209	0.107	0.524	0.088	0.392	0.106	0.135	0.314	1.185	4.212
1997	0.156	0.139	0.183	0.098	0.084	0.052	0.126	0.382	1.646	5.424
1998	0.103	0.173	0.068	0.032	0.087	0.014	-0.045	0.447	1.648	4.711
1999	0.067	0.052	-0.069	0.053	0.042	0.052	0.006	0.473	0.964	3.592
2000	0.049	0.094	-0.033	0.013	0.040	0.141	0.012	0.946	1.004	4.024
2001	0.057	0.198	0.001	0.155	0.188	0.040	0.100	1.348	1.155	5.575
2002	0.071	0.07	-0.002	0.046	0.086	0.011	0.088	2.137	1.443	3.632
2003	0.042	0.049	0.007	0.079	0.082	0.421	0.061	1.175	2.181	6.523
2004	0.037	0.021	0.013	0.074	0.115	0.106	0.035	1.490	1.783	4.891
Average	0.140	0.245	0.386	0.574	0.571	1.063	0.508	1.221	1.151	4.274